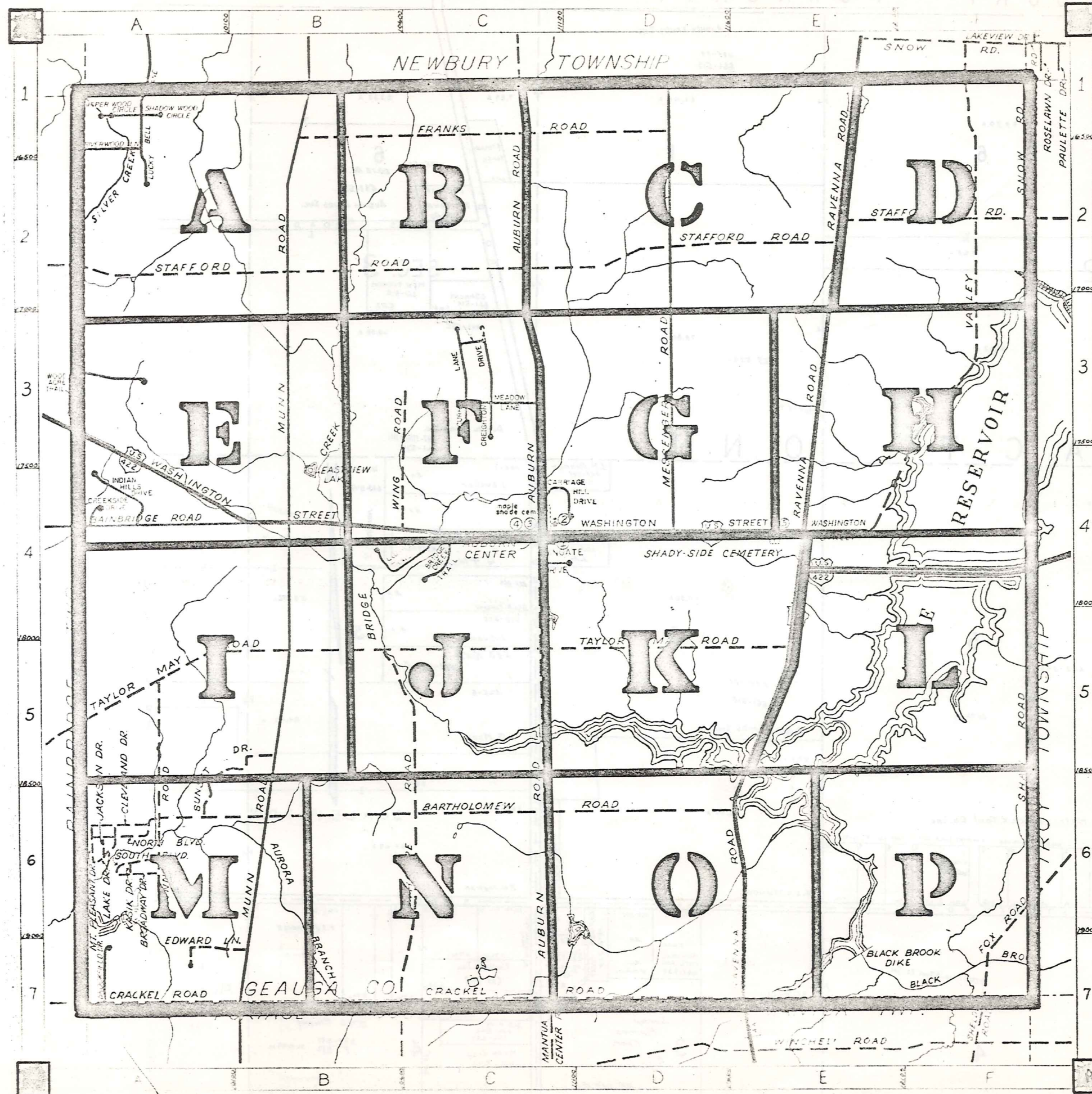


ROAD INDEX



| | | | |
|---|---|--|--|
| 1 | A AUBURN ROAD | J C1-C7 JACKSON DRIVE | S A6 SHAW ROAD SNOW ROAD F1-F2 SOUTH BLVD A6 STAFFORD RD. A2-E2 SUNSET DRIVE B5-A6 SHADOW WOOD CIRCLE A1 |
| 2 | B BAINBRIDGE ROAD A4 BARTHOLOMEW RD. A6-D6 BROADWAY DRIVE A6 BROOKFIELD DRIVE A7 BRIDGE CREEK TR. C4 | K KASIK DRIVE A6 | T TAYLOR MAY RD. A5-E5 THORPE ROAD B5-B7 TIMBER LN C3 |
| 3 | C CLEVELAND DRIVE A6 CRACKEL ROAD A7-E7 CREIGHTON DR C3 CURRY LN C3 CREEKSIDE DR. A4 CARRIAGE HILL D3 | L LAKE DRIVE A6 LUCKY BELL LN A1 LONGVIEW TR. C4 | U |
| 4 | D EDWARD LANE A7 | M MESSENGER RD. E1-D4 MT. PLEASANT DR. A6 MUNN RD. B1-B7 MEADOW LN. C3 | V VALLEY ROAD F1-E4 |
| 5 | E FOX ROAD F6-F7 FRANKS ROAD B1-D1 | N NORTH BLVD. A6 | W WASHINGTON ST. A3-E4 WING ROAD C3-C4 WHISPER WOOD CIRCLE A1 WOOD ACRE TR. A3 WINGATE DRIVE C4 |
| 6 | F INDIAN HILLS DR. A4 | O QUINN ROAD A5-A6 | X Y Z |
| 7 | G H I | R RAVENNA RD. E1-E7 RIVERWOOD LN. A1 | |

- ① AUBURN ELEM. SCHOOL
- ② AUBURN COMMUNITY CHURCH
- ③ AUBURN TOWN HALL
- ④ AUBURN VOL. FIRE DEPT.
- ⑤ STATE HIGHWAY GARAGE (SUB-STATION)

AUBURN TOWNSHIP

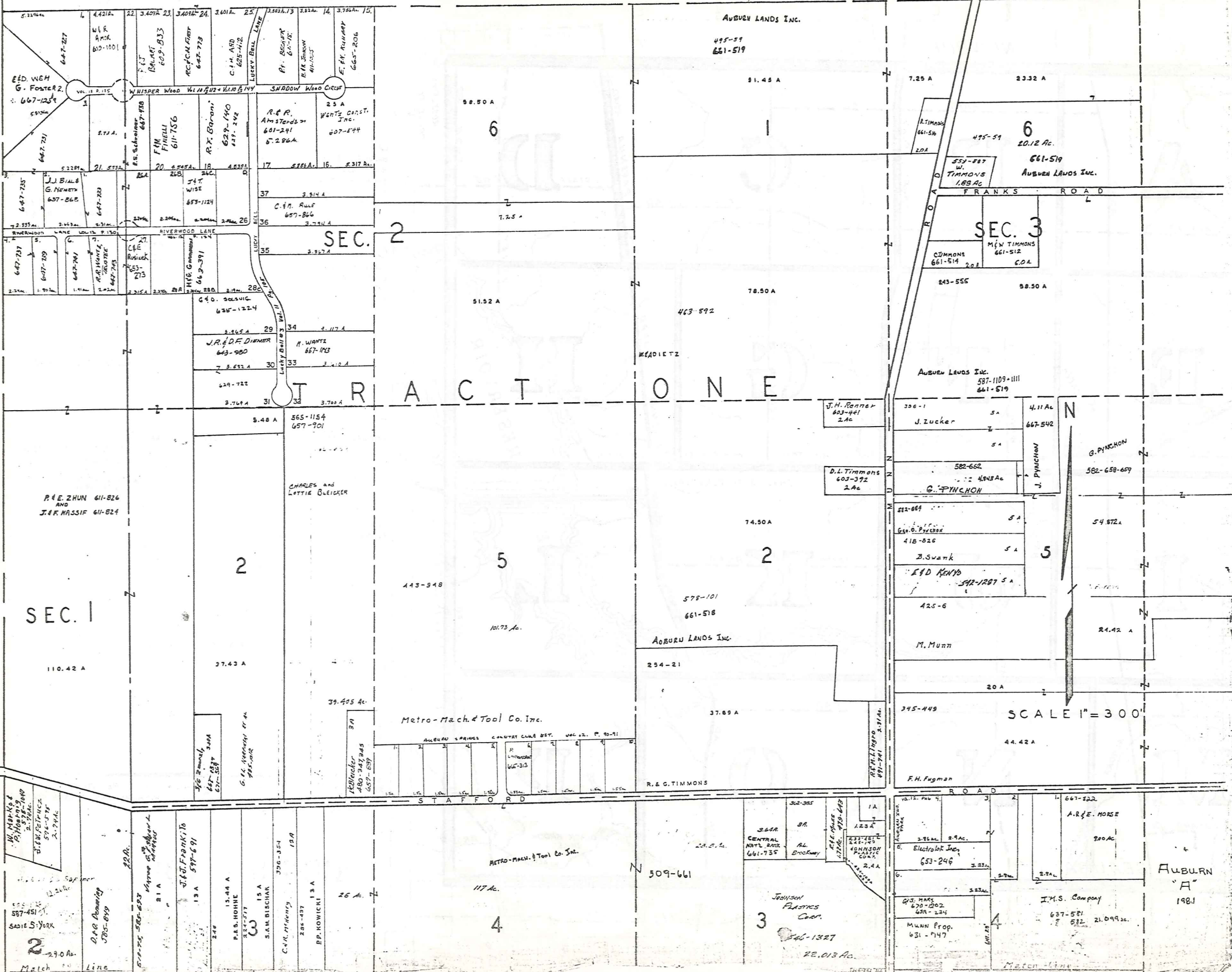
SCALE: 1" = 2000'

GEORGE E. PHILLIPS
GEAUGA COUNTY ENGINEER

- UNPAVED ROAD
- PAVED ROAD
- - - TOWNSHIP LINE
- - - COUNTY LINE



NEWBURY TOWNSHIP



SEC. 1

SEC. 2

SEC. 3

T R A C T O N E

SCALE 1"=300'

AUBURN 'A' 1981

W. MARKS & PAULSON INC. 587-4511
SADIE S. YORK 290 Ac.

P.A.S. MOINE 224-777
S.A.M. BIRCIAR 356-354
C.H. McNEELY 285-437
P.P. KOWICKI 25 A

Metro-Mach. & Tool Co. Inc. 117 Ac.

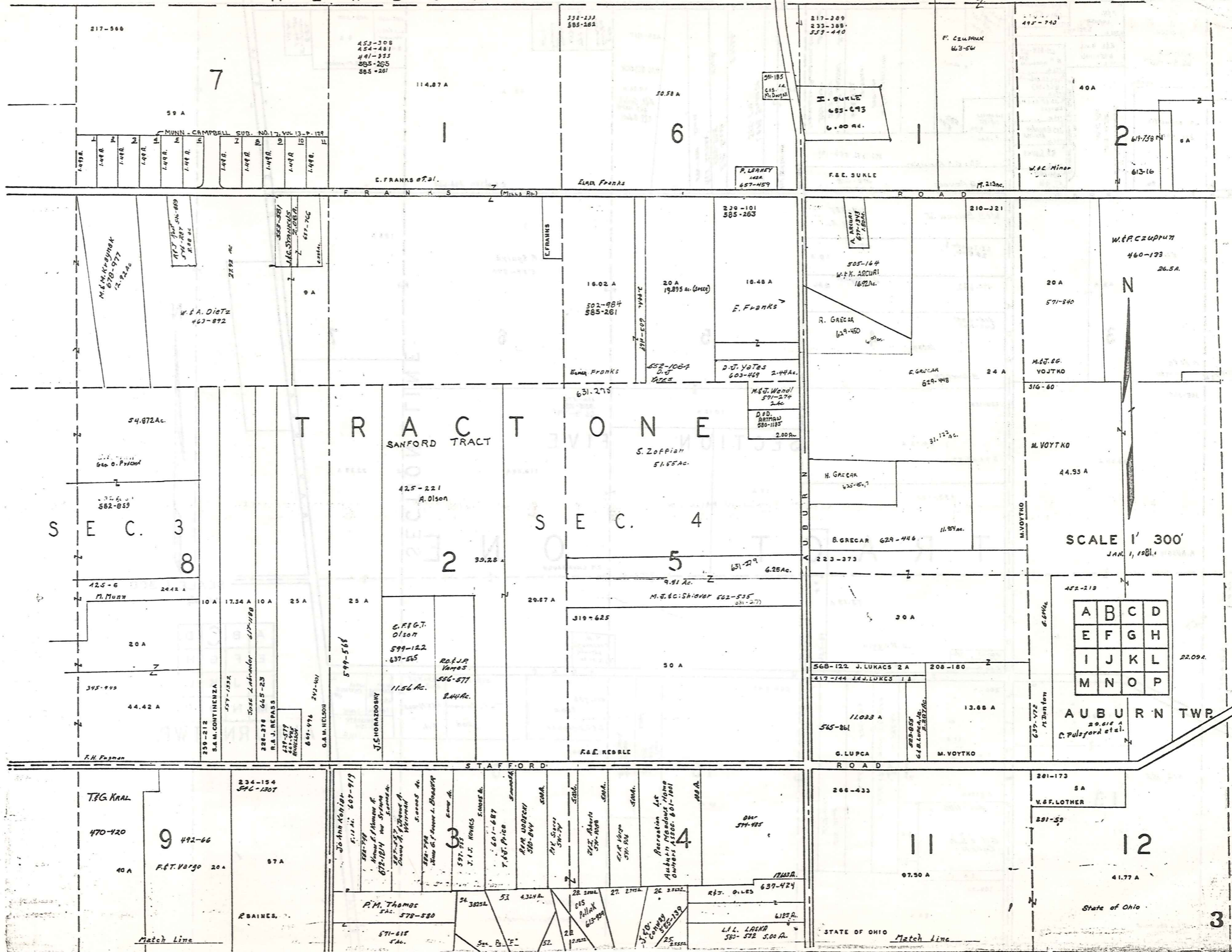
JOHNSON PLASTICS CORP. 28.013 Ac.

509-661

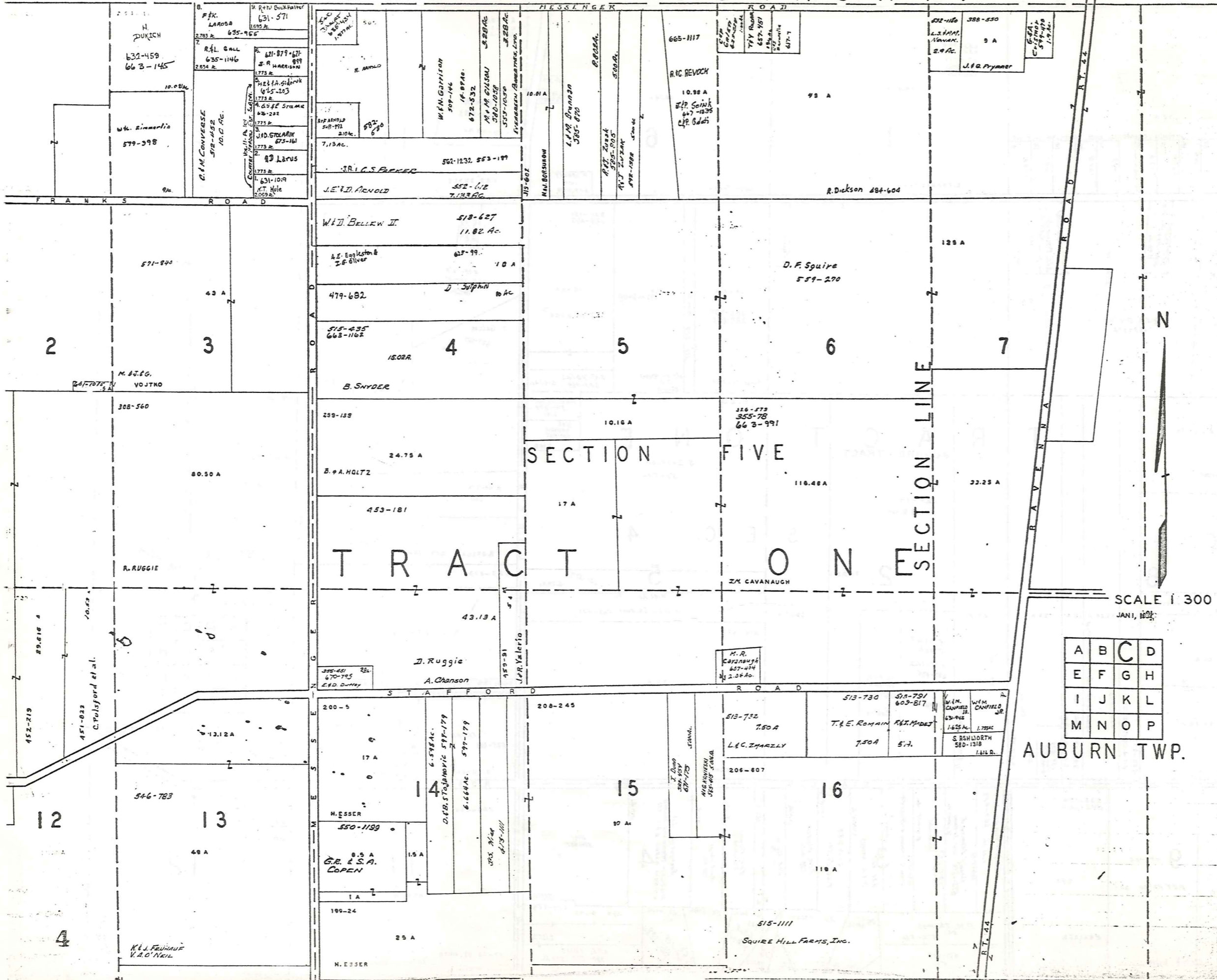
Electroak Inc. 653-246

I.M.S. Company 637-581

A.R.E. MOSE 200 Ac.



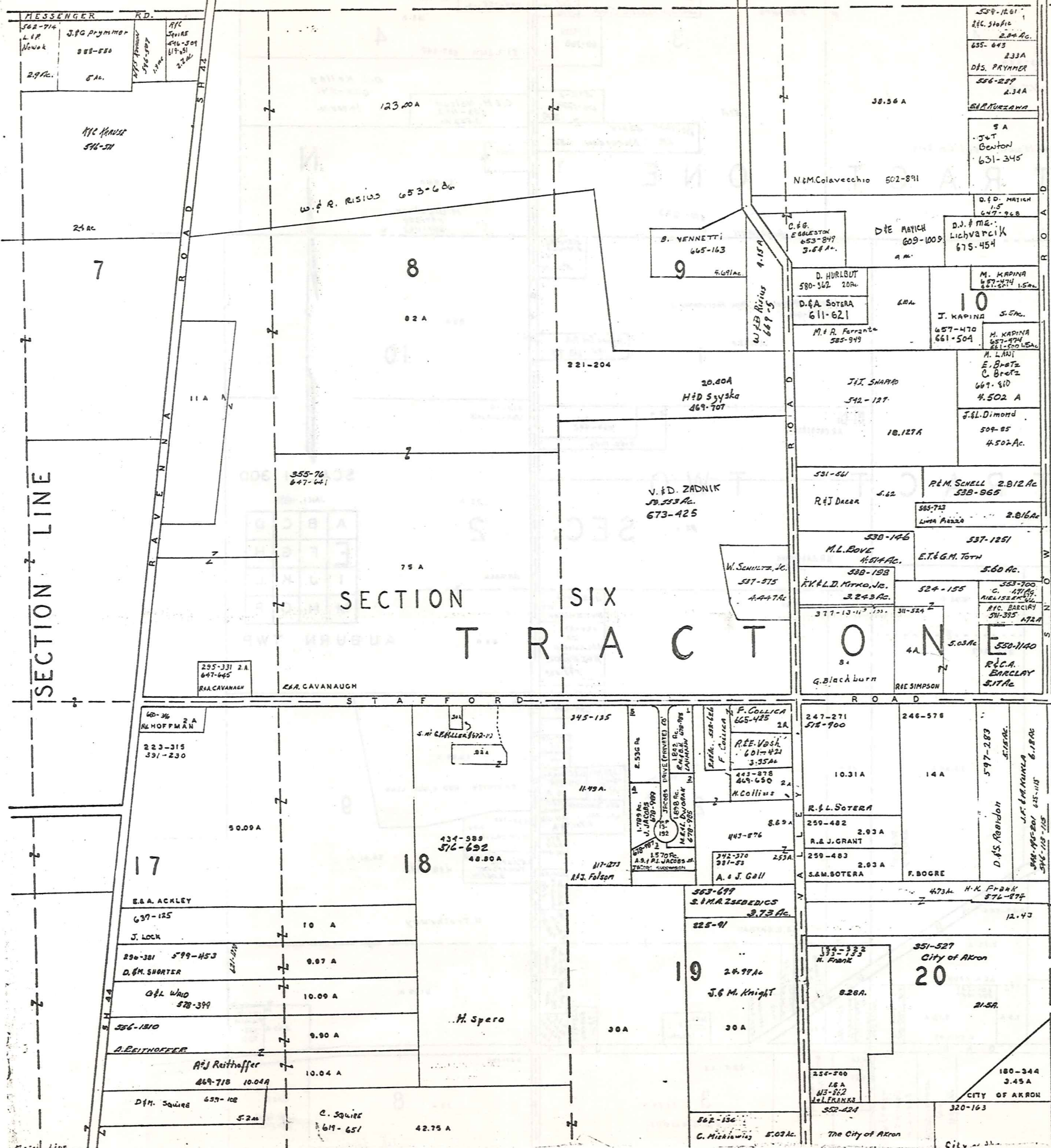
NEWBURK TOWNSHIP



SCALE 1 300
JAN 1, 1902

| | | | |
|---|---|---|---|
| A | B | C | D |
| E | F | G | H |
| I | J | K | L |
| M | N | O | P |

AUBURN TWP.



SECTION LINE

SECTION SIX TRACT

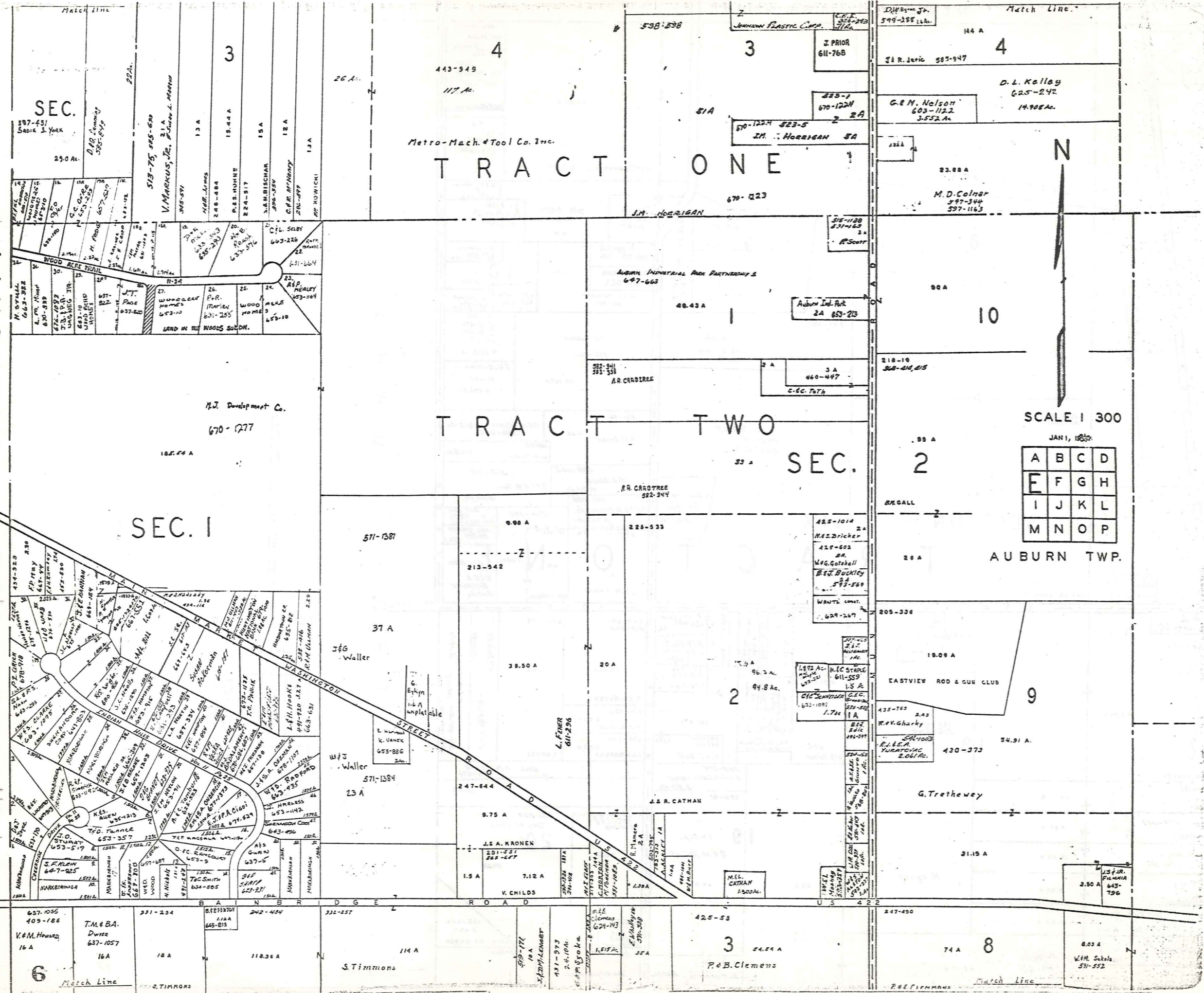
BURTON TWP.

SCALE 1 300

JAN 1, 1937

| | | | |
|---|---|---|---|
| A | B | C | D |
| E | F | G | H |
| I | J | K | L |
| M | N | O | P |

AUBURN TWP.



TRACT ONE

TRACT TWO

SEC. 3

SEC. 1

SEC. 2

SCALE 1 300

JAN 1, 1957

| | | | |
|---|---|---|---|
| A | B | C | D |
| E | F | G | H |
| I | J | K | L |
| M | N | O | P |

AUBURN TWP.

Metro-Mach. & Tool Co. Inc.

M.J. Development Co.

EASTVIEW ROD & GUN CLUB

G. Trethewey

P.E.B. Clemens

S. Timmons

W.M. Sekula

P.E. FIMMANS

AUBURN INDUSTRIAL PARK PARTNERSHIP 2

Auburn Ind. Park

A.R. CRADDOCK

A.R. CRADDOCK

M.S. Dricker

Weg. Gotshell

B. Buckley

W.B. COMPTON

H.C. STAPLE

C.H. SCHWENKER

R.V. Gharkey

R. L. B. A.

YUCATECO INC.

M.L. CATHAN

M.L. CATHAN

M.L. CATHAN

M.L. CATHAN

M.L. CATHAN

M.L. CATHAN

M.L. CATHAN

M.L. CATHAN

M.L. CATHAN

M.L. CATHAN

M.L. CATHAN

M.L. CATHAN

M.L. CATHAN

M.L. CATHAN

387-431

54014 J. York

29.0 Ac.

D. D. Leming

585-849

V. MARCUS, JR.

13A

18.44 A

15A

12A

13A

13A

13A

13A

13A

13A

13A

13A

13A

13A

13A

13A

13A

13A

13A

13A

13A

13A

13A

13A

13A

13A

13A

13A

13A

13A

13A

13A

13A

13A

13A

13A

13A

13A

13A

13A

13A

13A

13A

13A

13A

13A

13A

13A

13A

13A

13A

13A

13A

13A

13A

13A

13A

13A

13A

13A

13A

13A

13A

13A

13A

13A

13A

13A

13A

13A

13A

13A

13A

13A

13A

13A

13A

13A

13A

13A

13A

13A

13A

13A

13A

13A

13A

13A

13A

13A

13A

13A

13A

13A

13A

13A

13A

13A

13A

13A

13A

13A

13A

13A

13A

13A

13A

13A

13A

13A

13A

13A

13A

13A

13A

13A

13A

13A

13A

13A

13A

13A

13A

13A

13A

13A

13A

13A

13A

13A

13A

13A

13A

13A

13A

13A

13A

13A

13A

13A

13A

13A

13A

13A

13A

13A

13A

13A

13A

13A

13A

13A

13A

13A

13A

13A

13A

13A

13A

13A

13A

13A

13A

13A

13A

13A

13A

13A

13A

13A

13A

13A

13A

13A

13A

13A

13A

13A

13A

13A

13A

13A

13A

13A

13A

13A

13A

13A

13A

13A

13A

13A

13A

13A

13A

13A

13A

13A

13A

13A

13A

13A

13A

13A

13A

13A

13A

13A

13A

13A

13A

13A

13A

13A

13A

13A

13A

13A

13A

13A

13A

13A

13A

13A

13A

13A

13A

13A

13A

13A

13A

13A

13A

13A

13A

13A

13A

13A

13A

13A

13A

13A

13A

13A

13A

13A

13A

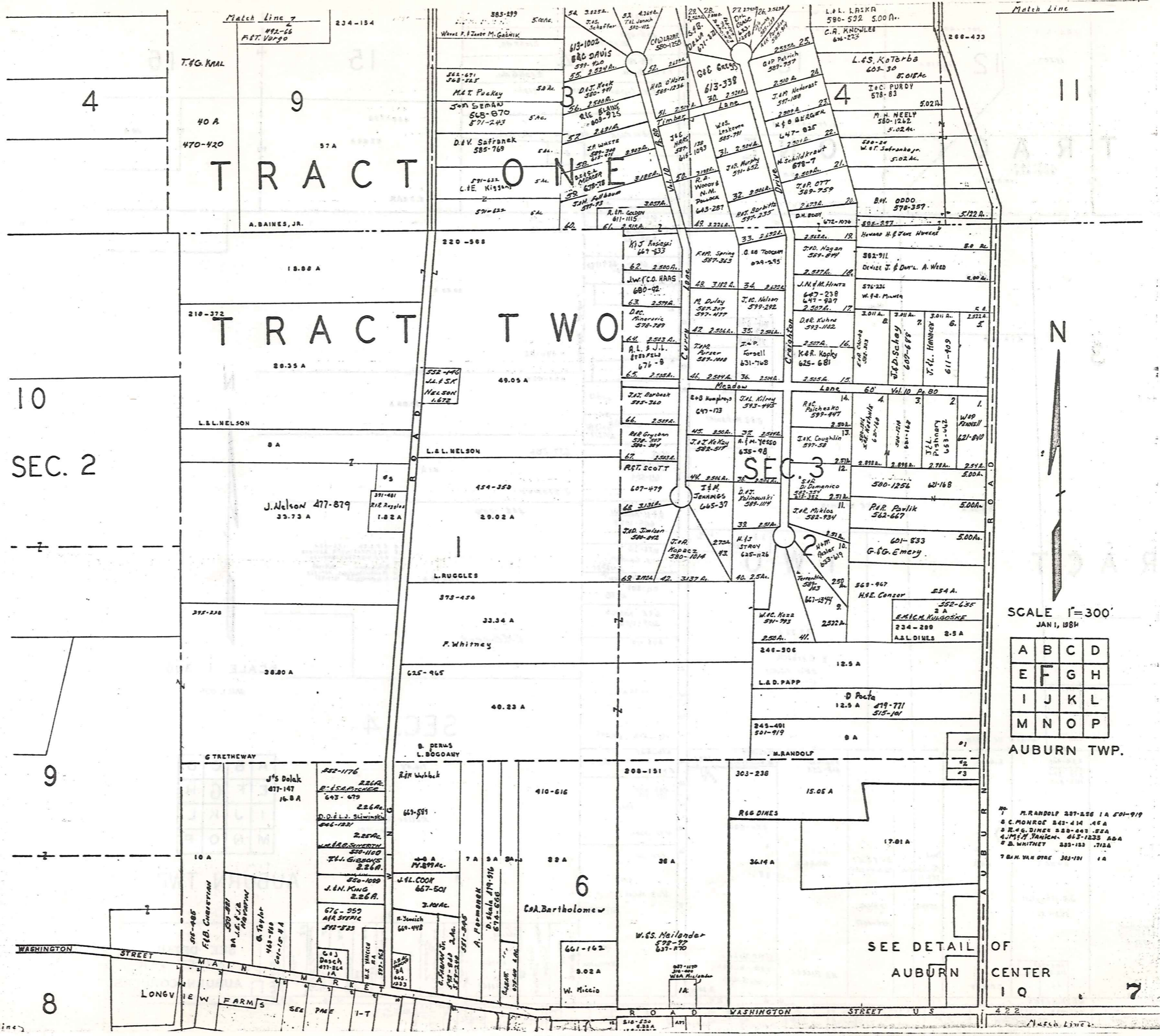
13A

13A

13A

13A

13A



TRACT ONE

TRACT TWO

SEC 3

SEC. 2

Match Line

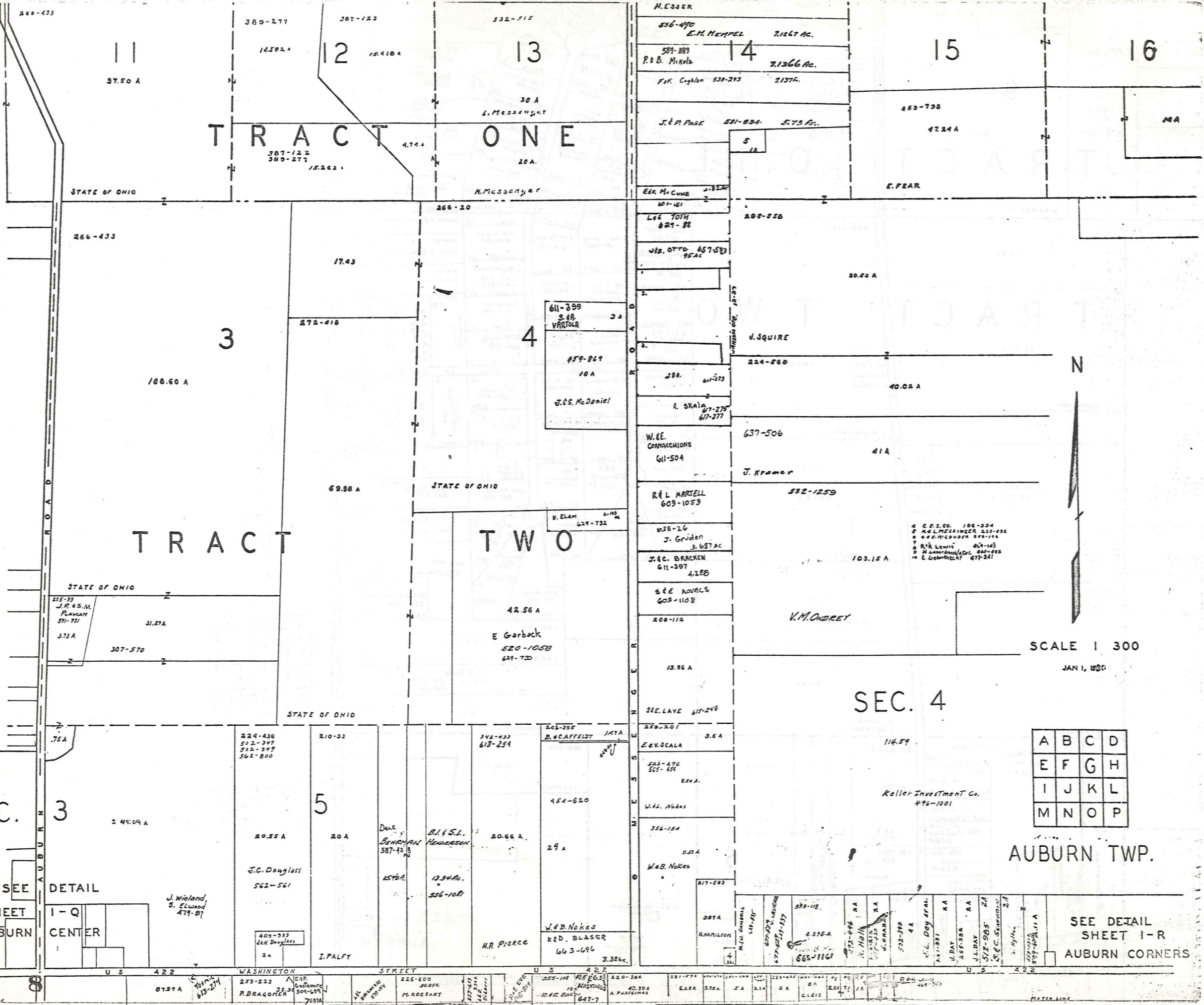
SCALE 1"=300'

| | | | |
|---|---|---|---|
| A | B | C | D |
| E | F | G | H |
| I | J | K | L |
| M | N | O | P |

AUBURN TWP.

- M. RANDOLF 287-286 1A 501-919
- C. MONROE 243-414 45A
- E. G. DINEEN 222-443 55A
- J. M. J. JANICH 463-1235 24A
- B. WHITNEY 222-123 712A
- B. M. W. DRE 303-101 1A

SEE DETAIL OF AUBURN CENTER 10



TRACT ONE

TRACT TWO

TRACT THREE

SEC. 4

AUBURN TWP.

SCALE 1 300
JAN 1, 1938

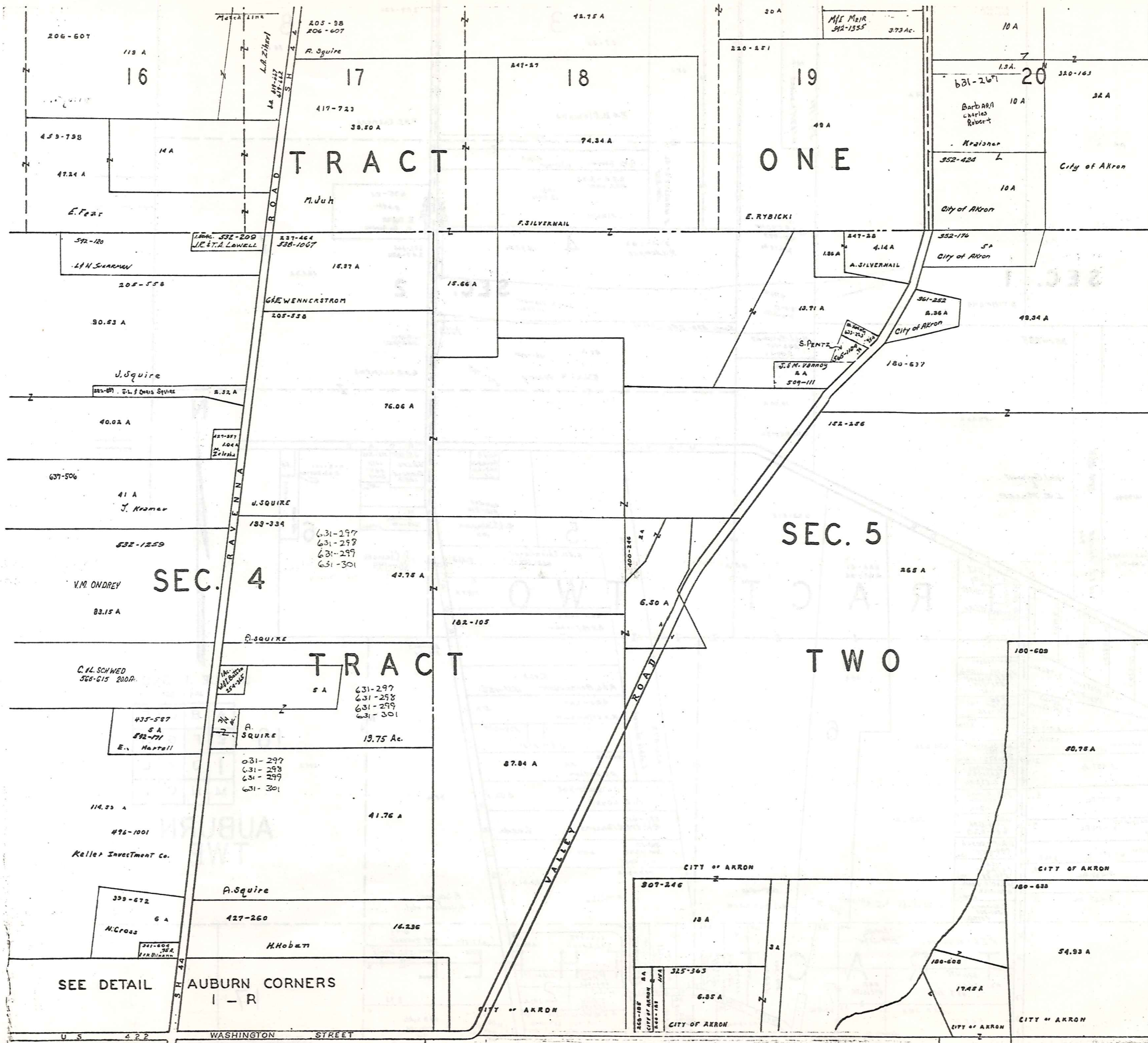
| | | | |
|---|---|---|---|
| A | B | C | D |
| E | F | G | H |
| I | J | K | L |
| M | N | O | P |

SEE DETAIL SHEET I-Q AUBURN CENTER

SEE DETAIL SHEET I-R AUBURN CORNERS

SEE DETAIL SHEET I-Q AUBURN CENTER

WASHINGTON STREET



Match Line

TROY TOWNSHIP

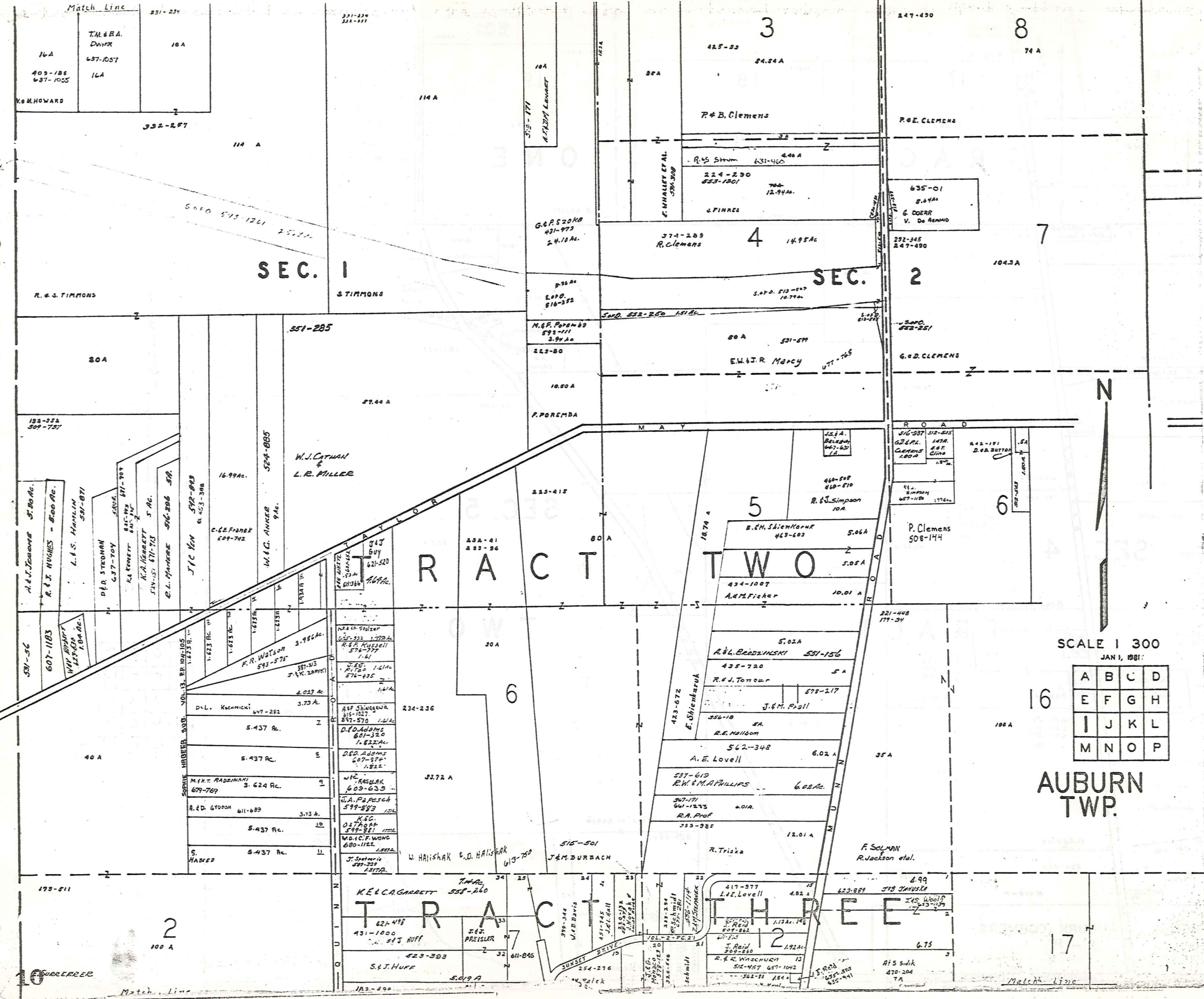


SCALE 1 300

JAN 1, 1981

| | | | |
|---|---|---|---|
| A | B | C | D |
| E | F | G | H |
| I | J | K | L |
| M | N | O | P |

AUBURN TWP.



SEC. 1

SEC. 2

TRACT TWO

TRACT THREE

SCALE 1/300
JAN 1, 1901

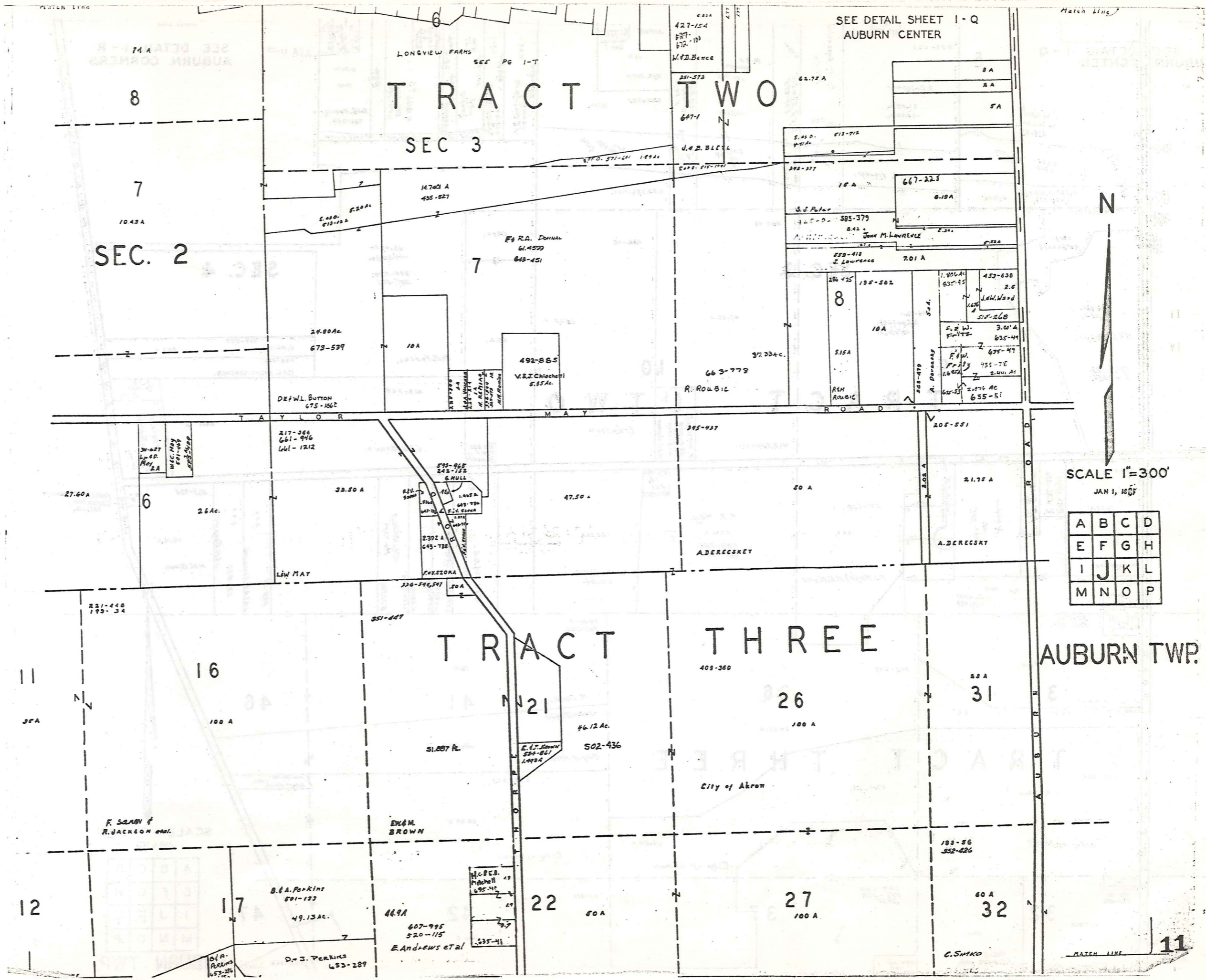
| | | | |
|---|---|---|---|
| A | B | C | D |
| E | F | G | H |
| I | J | K | L |
| M | N | O | P |

AUBURN TWP.



Match Line

Match Line



TRACT TWO

SEC 3

SEC. 2

TRACT THREE

AUBURN TWP.

SEE DETAIL SHEET I-Q
AUBURN CENTER

SCALE 1"=300'
JAN 1, 1887

| | | | |
|---|---|---|---|
| A | B | C | D |
| E | F | G | H |
| I | J | K | L |
| M | N | O | P |

8

7

7

6

16

21

26

31

12

17

22

27

32

11

LONGVIEW FARMS
SEE PG 1-T

427-154
M.D. Bence

14.700 A
455-627

E.R.A. DONNAN
61.4599
648-451

24.800 A
673-539

10 A

492-885
V.S.J. Chiochetti
5.85 A

DE W.L. BUTTON
675-1862

37.224 A
663-778
R. ROUBIC

8

10 A

1.900 A
635-45

453-638
2.6
J.W. Ward

3.00 A
635-44

675-47

435-76

2.441 AC
655-51

27.60 A

26 A

33.50 A

595-965
243-152
G. HULL

47.50 A

395-437

60 A

205-551

21.75 A

A. DEREGSKY

221-448
179-34

551-447

F. SAUND &
R. JACKSON 6001.

ENAM.
BROWN

B. & A. Parkins
601-123
49.13 AC.

44.9 A

607-995
520-115
E. Andrews et al

H.C.B.S.
Mitchell
695-142

46.12 AC.
502-436
E.L. Brown
524-661
1.990 A

City of Akron

183-56
552-426

60 A

C. SMKO

SEE AUBURN CENTER

SEE DETAIL I-R AUBURN CORNERS

SEC. 3

SEC. 4

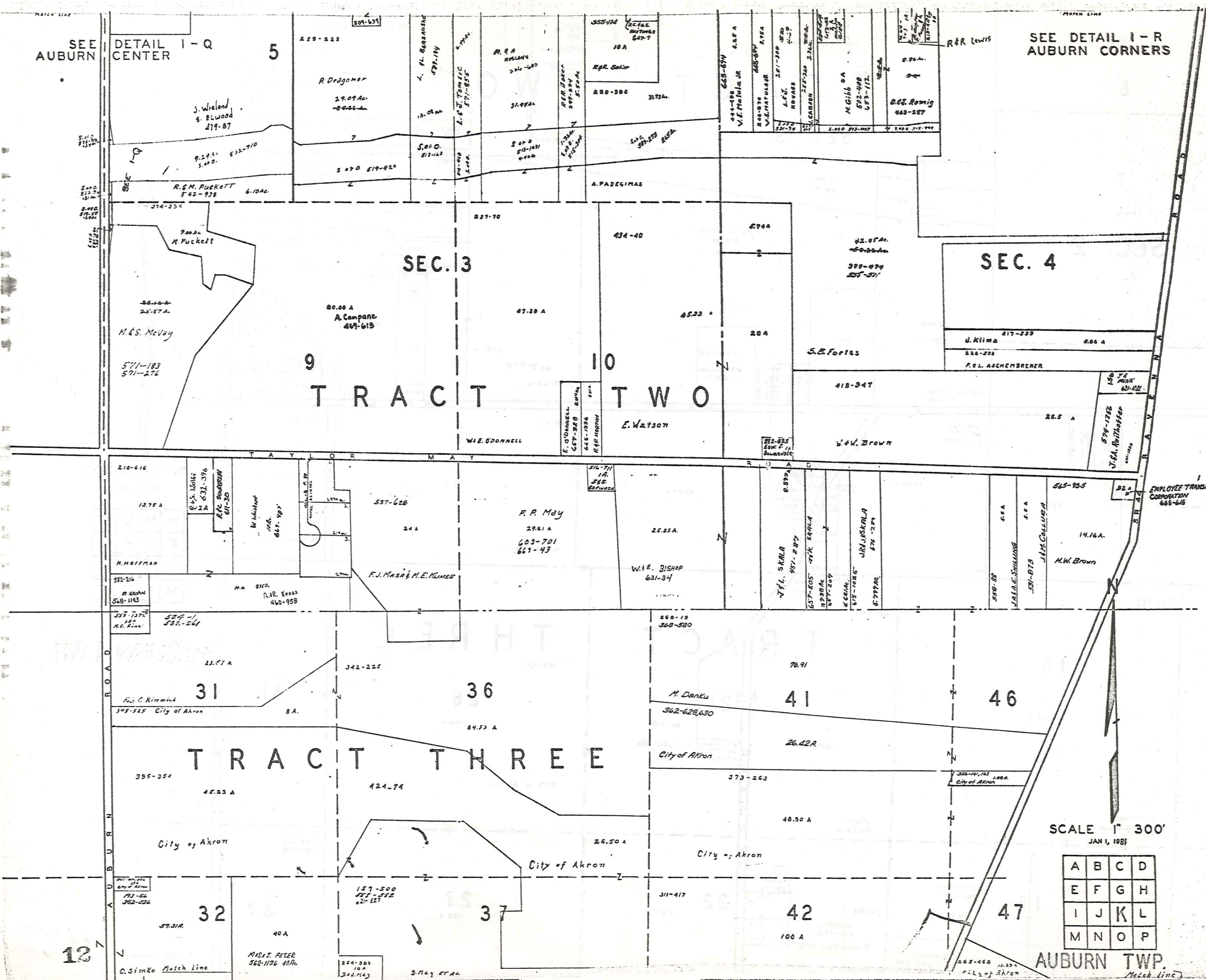
TRACT TWO

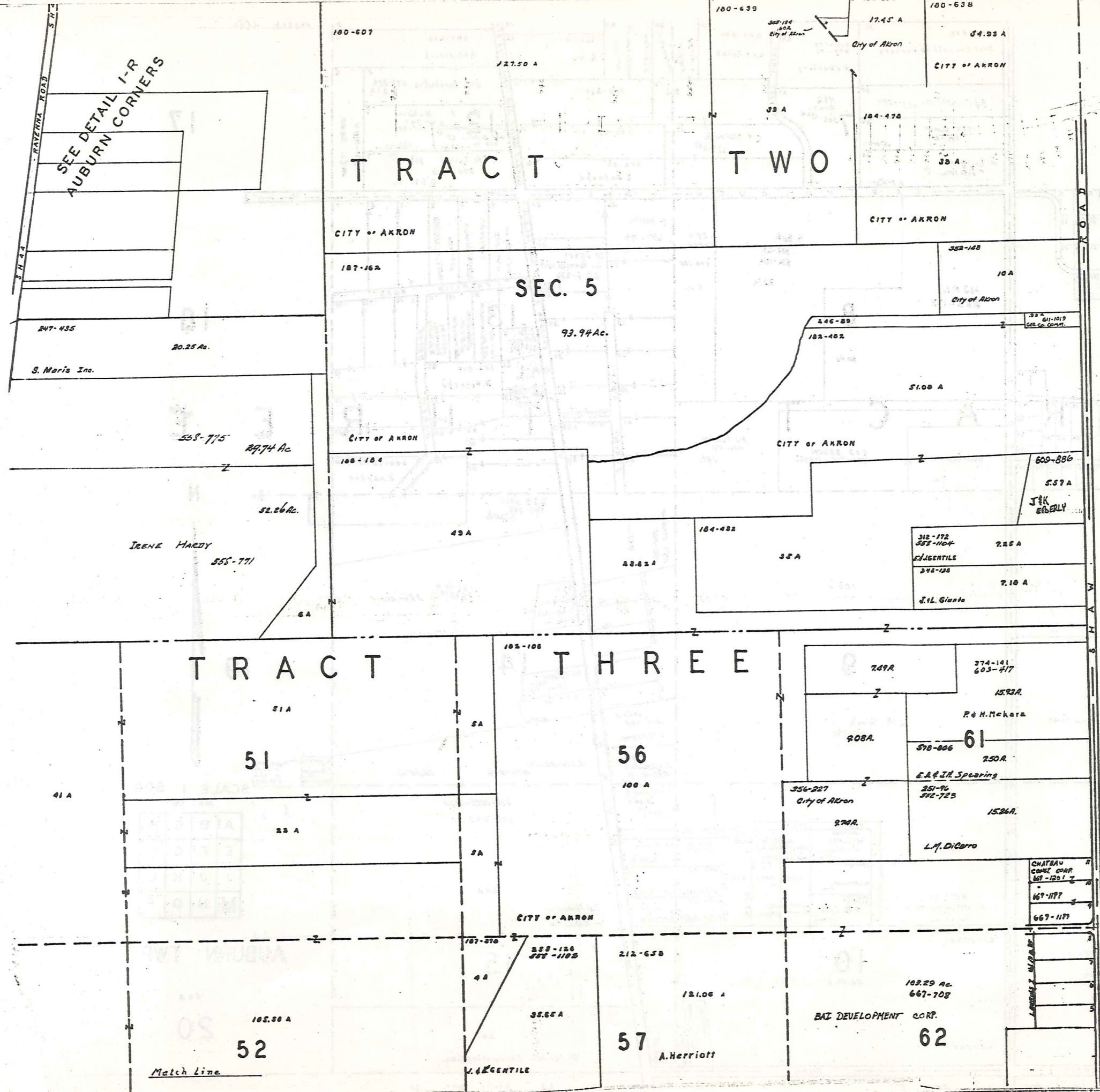
TRACT THREE

SCALE 1" = 300'
JAN 1, 1927

| | | | |
|---|---|---|---|
| A | B | C | D |
| E | F | G | H |
| I | J | K | L |
| M | N | O | P |

AUBURN TWP.





SEE DETAIL I-R
AUBURN CORNERS

TRACT TWO

SEC. 5

TOWNSHIP

TRACT THREE



SCALE 1" = 300'

| | | | |
|---|---|---|---|
| A | B | C | D |
| E | F | G | H |
| I | J | K | L |
| M | N | O | P |

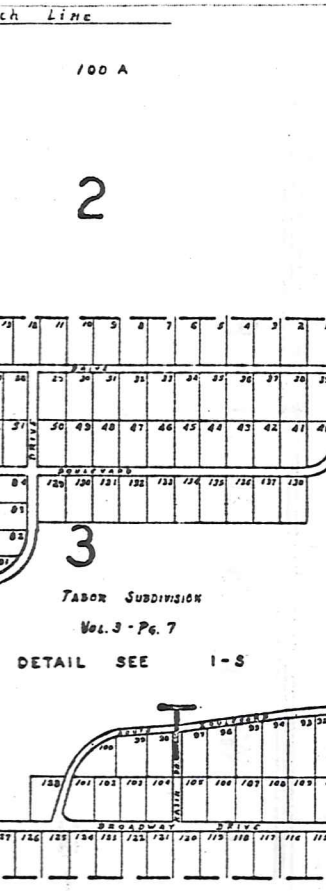
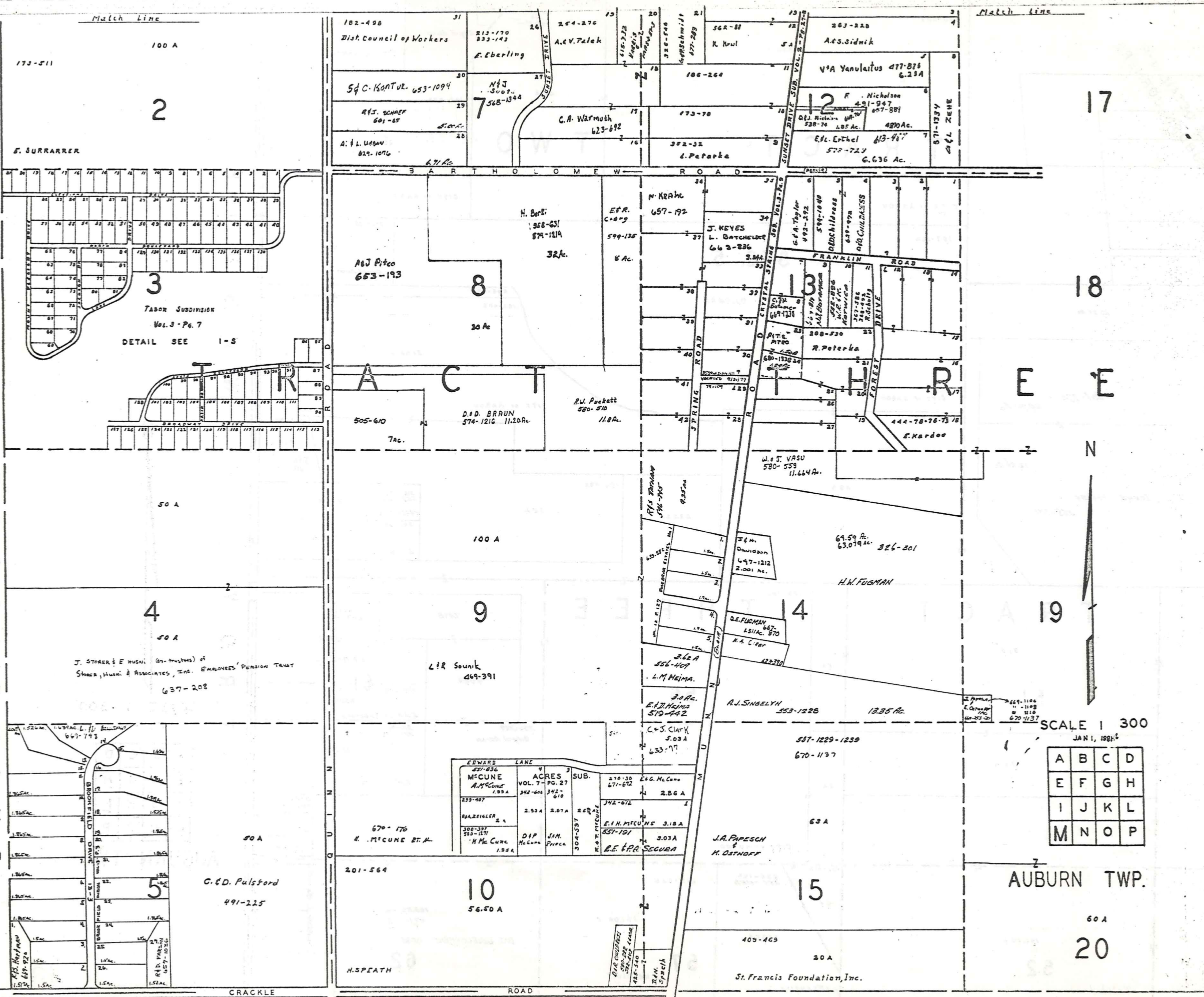
AUBURN TWP.

Match Line

Match Line

B A I N B R I D G E T O W N S H I P

P O R T A G F C O U N T Y

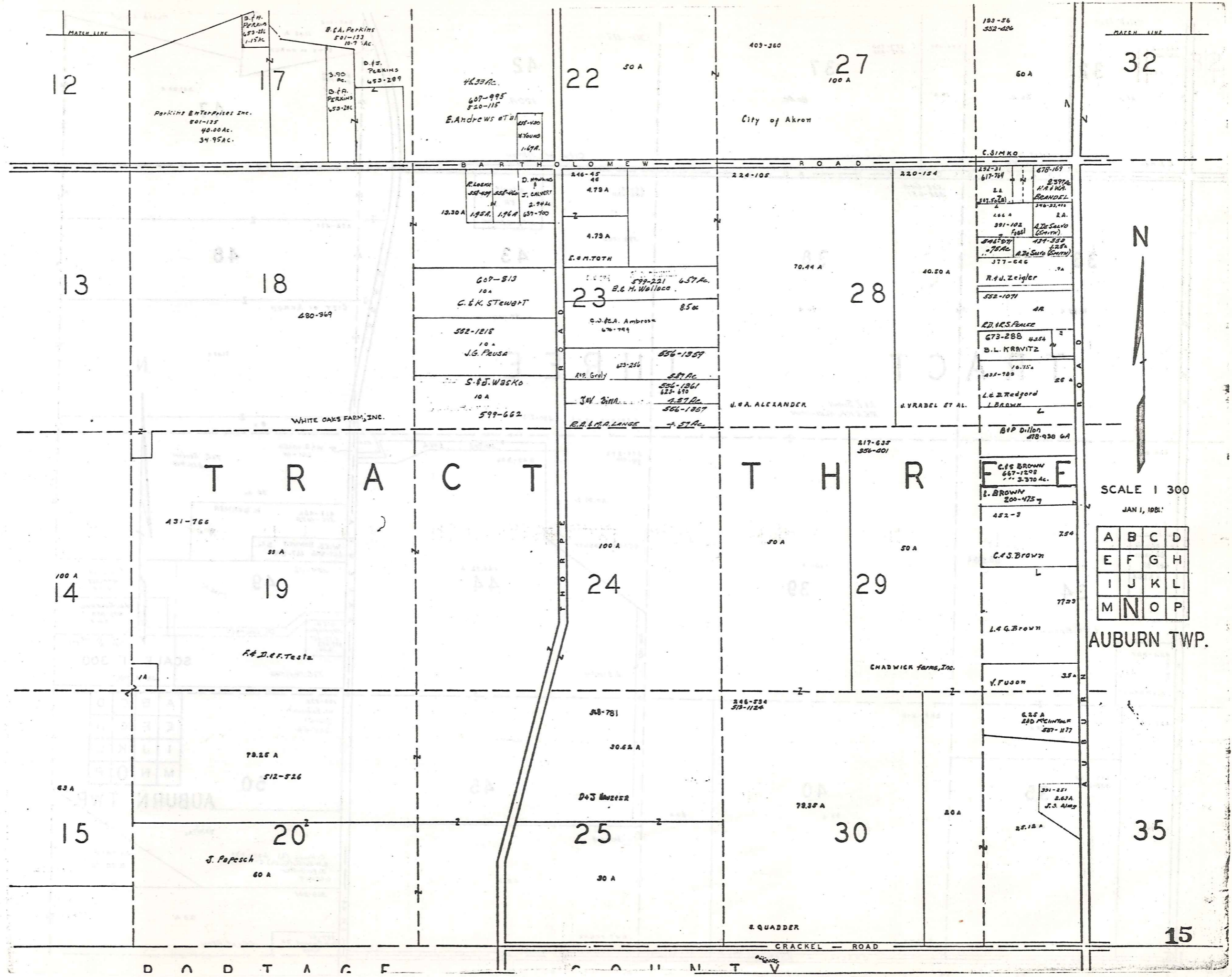


SCALE 1 300
JAN 1, 1924

| | | | |
|---|---|---|---|
| A | B | C | D |
| E | F | G | H |
| I | J | K | L |
| M | N | O | P |

AUBURN TWP.

60 A
20



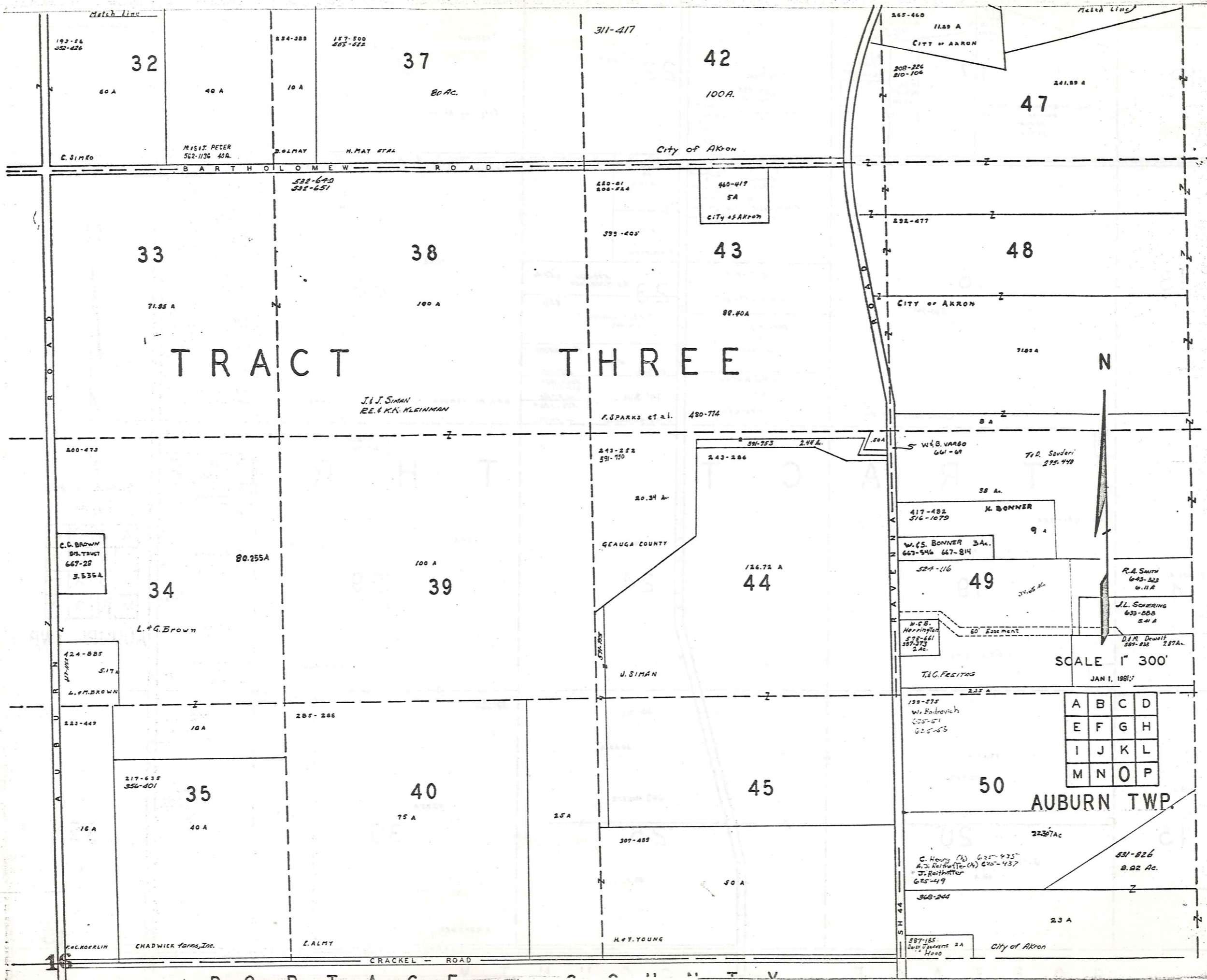
SCALE 1 300
JAN 1, 1981

| | | | |
|---|---|---|---|
| A | B | C | D |
| E | F | G | H |
| I | J | K | L |
| M | N | O | P |

AUBURN TWP.

15

B O D T A G E C O M M I T V



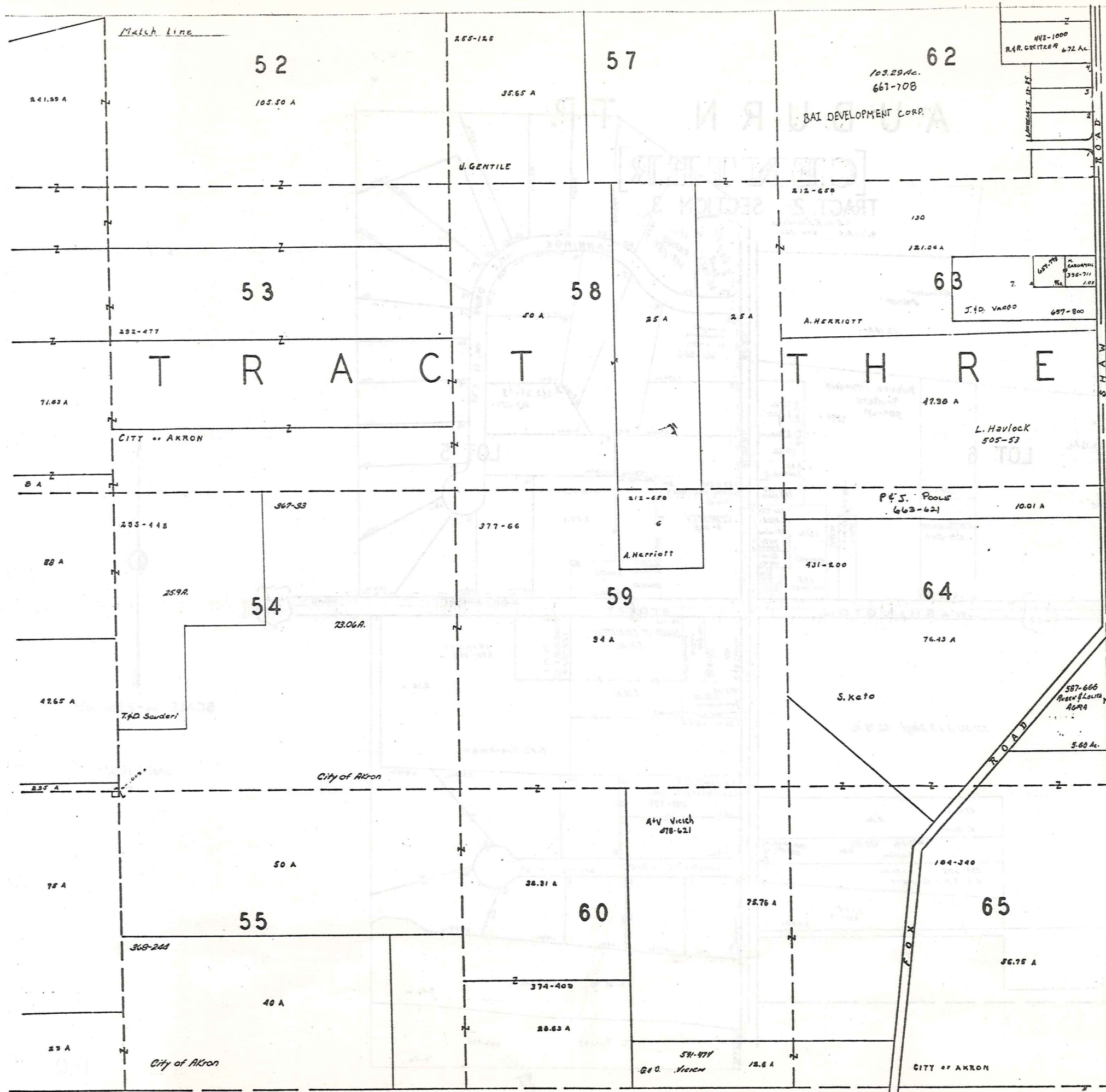
TRACT THREE

SCALE 1" = 300'

JAN 1, 1981

| | | | |
|---|---|---|---|
| A | B | C | D |
| E | F | G | H |
| I | J | K | L |
| M | N | O | P |

AUBURN TWP.



Match Line

Match Line

TRACT THREE

TOWNSHIP

TRORY



SCALE 1" = 300'

JAN 1, 1981

| | | | |
|---|---|---|---|
| A | B | C | D |
| E | F | G | H |
| I | J | K | L |
| M | N | O | P |

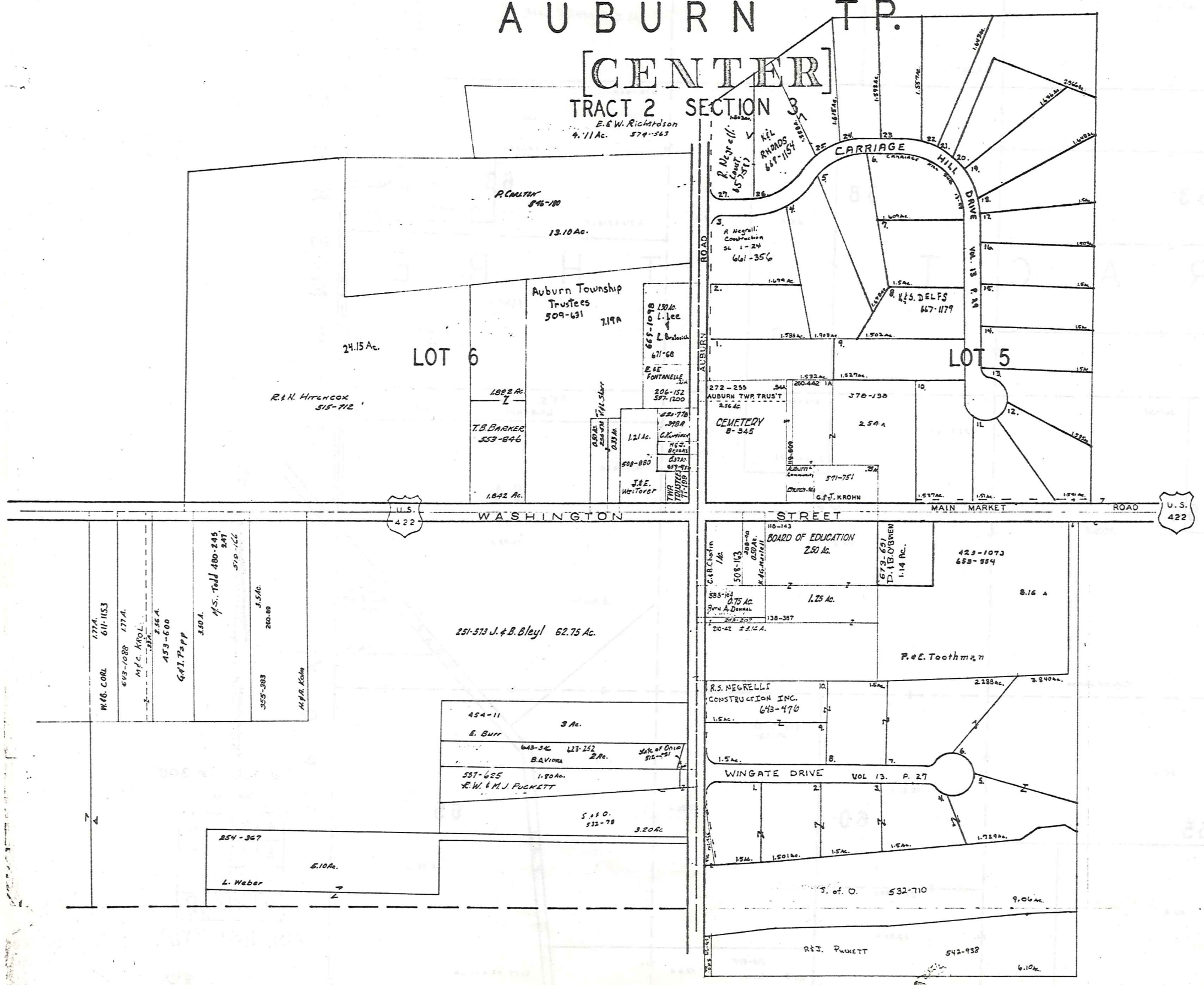
AUBURN TWP.

AUBURN T.P.

[CENTER]

TRACT 2 SECTION 3

E. & W. Richardson
9.71 Ac. 574-563

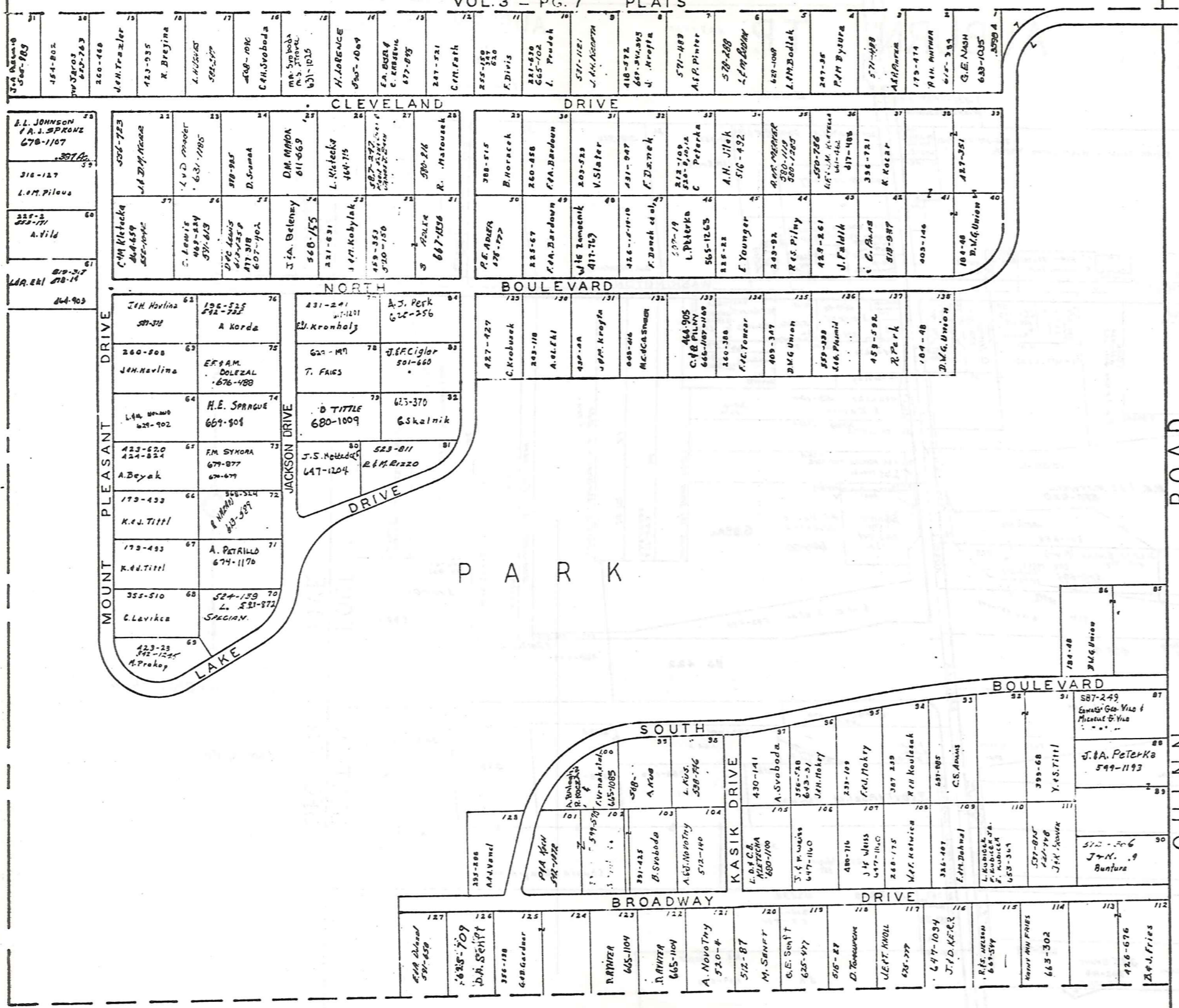


SCALE 1IN.=2.5CH.=165FT.

JAN 1, 1981

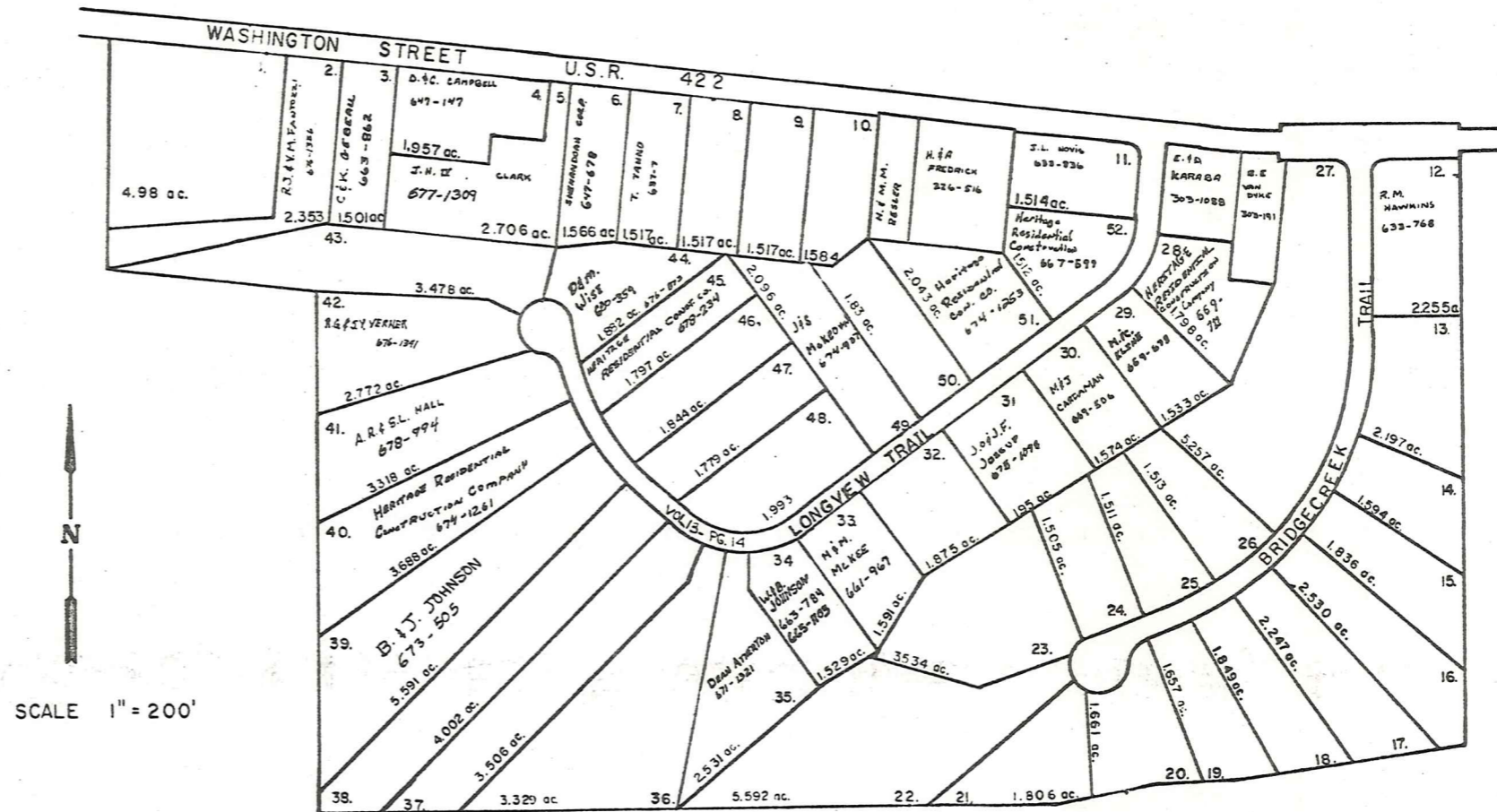
TABOR SUBDIVISION

VOL. 3 - PG. 7 PLATS



SCALE 1" = 100'
 JAN. 1981
 AUBURN TWP.

AUBURN
 O.L. 8 SEC. 2
 O.L. 6 SEC. 3 TRACT 2



SCALE 1" = 200'

LONGVIEW FARMS 1 & 2

VOL. 12 PP. 62-64
 VOL. 13 PP. 13-16

Explanation and Use Sheet for Geauga County, Ohio

SAMPLE (PARTIAL) COUNTY INDEX MAP



- Township Boundary
- Township Name
- Village Boundary
- Village Name
- Tract Lot Number
- Street Name
- Acreage
- Deed Book & Page
- Owners Name
- Denotes Continous Ownership

SAMPLE (PARTIAL) MAP PAGE



- Map Page Number
- Village Name
- Village Boundary
- Township Name

SAMPLE (PARTIAL) MUNICIPALITY INDEX MAP



- Street Name
- Village Name
- Township Name

USE OF THE MAP VOLUME

1. LOCATE THE GENERAL AREA OF INTEREST ON THE COUNTY INDEX MAP, ATLAS PAGE 'B', AND NOTE THE MUNICIPALITY NAME (TOWNSHIP OR VILLAGE).
2. REFER TO THE TABLE OF CONTENTS, ATLAS PAGE 'C', AND NOTE THE BEGINNING ATLAS PAGE NUMBER FOR THE MUNICIPALITY OF INTEREST.
3. TURN TO THE PAGE INDICATED. ON THIS PAGE WILL APPEAR AN INDEX MAP FOR THAT MUNICIPALITY.
4. LOCATE THE GENERAL AREA OF INTEREST AND NOTE THE MAP PAGE NUMBER. THIS MAY BE EITHER A LETTER OR A NUMBER.
5. MAP PAGES ARE IN ALPHABETICAL (OR NUMERICAL) SEQUENCE FOLLOWING THE MUNICIPALITY INDEX MAP. FOLLOW SEQUENCE TO THE MAP PAGE INDICATED.
6. LOCATE SPECIFIC PARCEL OF INTEREST AND NOTE THE DESIRED INFORMATION.

NOTE: ON SOME MAPS YOU MAY BE REFERRED TO A DETAIL SHEET SHOWING AN ENLARGEMENT OF THE AREA. THESE MAPS ARE FOUND AT THE END OF THE REGULAR MAP PAGES IN EACH MUNICIPALITY IN EITHER ALPHABETICAL OR NUMERICAL SEQUENCE.

NOTE: CHARDON VILLAGE HAS TITLE SHEETS. TO LOCATE OWNERS NAME, NOTE THE PARCEL NUMBER, REFER TO THE TITLE PAGE FOLLOWING THE MAP OF INTEREST, FOLLOW NUMERICAL SEQUENCE TO THE PARCEL NUMBER OF INTEREST AND NOTE THE DESIRED INFORMATION. IN ALL OTHER MUNICIPALITIES THE OWNERS NAME APPEARS ON THE MAP PAGE.

This book is the property of REAL ESTATE DATA, INC. and is distributed by REDI under a leasing arrangement requiring return to REDI upon termination of the lease. REDI reserves the right to reclaim this book if found in the possession of any firm or person where possession was obtained through any unauthorized source.